

# URTOPIA

## JOY ULTRA



SPRING 2026

# JOY ULTRA

NEW

Lightweight wide tire e-bike



Creme



Glacier Blue



Rose Red



Pink



Charcoal Grey



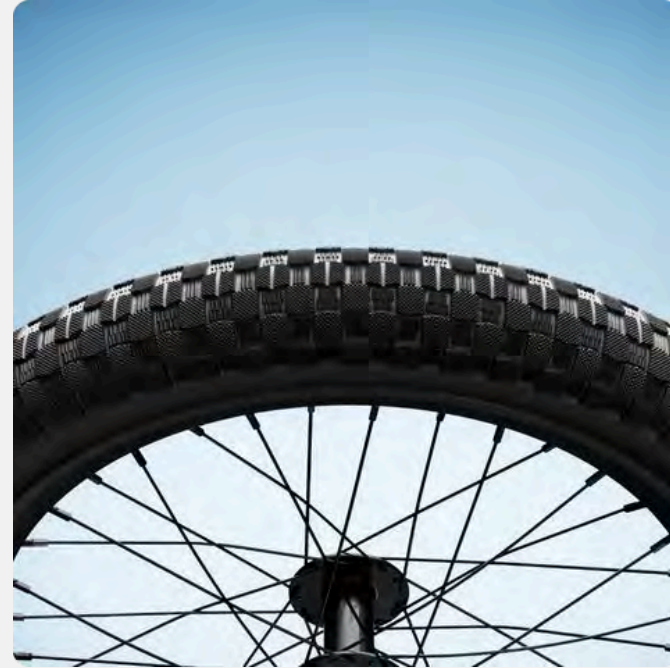
**JOY ULTRA**

**NEW**

Lightweight wide tire e-bike



**Toray® Carbon Fiber**  
Both Frame and Fork



**Wide Tire**  
20" x 3" Hybrid



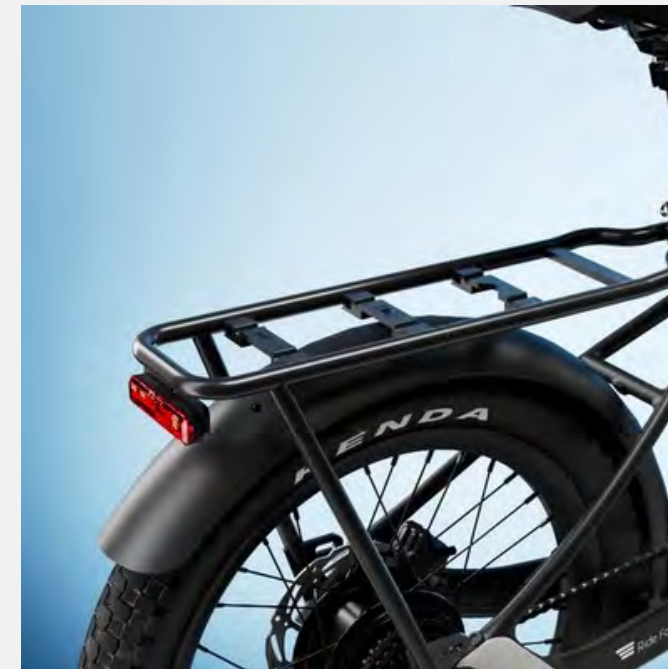
**Adjustable Handlebar**  
Built-in Color LCD Display



**Full Throttle**  
and Pedal Assist



**Torque Sensor**  
Ultra-Smooth Riding



**MIK HD Rear Rack**  
w/ Brake Sensing Rear Light

# JOY ULTRA

NEW

Lightweight wide tire e-bike

<b>Features</b>	2.0" color LCD display 4-level pedal assist (Eco, Tour, Boost, Turbo)
<b>Size</b>	One size, suitable for 4'11" - 6'3"
<b>Max. speed limit</b>	20mph by default (Class 2)
<b>Throttle</b>	Yes (up to 20mph)
<b>Weight limit</b>	330 lbs
<b>Range</b>	30-65 miles
<b>Net weight</b>	46 lbs w/ battery 39 lbs w/o battery
<b>Default accessories</b>	MIK HD rear rack (100lbs), kickstand, fenders, light reflectors, pedals, bell
<b>Optional accessories</b>	Front basket (33lbs), water bottle cage, Bicycle Tracker Kit

<b>Frame</b>	Carbon fiber
<b>Fork</b>	Carbon fiber
<b>Handlebar</b>	Aluminum, extender 0-60° adjustable
<b>Motor</b>	Customized rear hub motor, 500W 36V 50N.m
<b>Gearing</b>	Shimano Altus RD-M310-Smart rear derailleur
<b>Drive train</b>	Shimano Altus 8-Speed chain
<b>Battery</b>	529.2Wh 36V/14.7Ah, Samsung Li-ion, UL2271 certified, removable battery
<b>Brakes</b>	TEKTRO HD-E3520 hydraulic disc brake with power cut-off sensor
<b>Headlights</b>	External front light, 30 Lux/95LM
<b>Rear lights</b>	External tail light w/ brake sensing, rear rack mounted
<b>Wheels</b>	20 inch
<b>Tires</b>	Kenda K905 20"x3.0"